

## Apex Bulkhead

**Category:** Apex

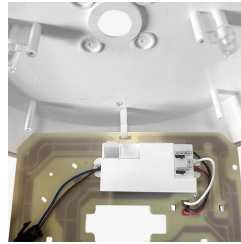
**Part Number:** 431470-E3-MW

**Description:** Apex Bulkhead 10W/14W/17W 3CCT White Plug & Play  
E-SEL3 Emergency & Microwave



### Product Features:

- Wattage selectable: 10W/14W/17W
- 3CCT Selectable: 3000K, 4000K, 6000K
- IK08 impact rated & IP65 Ingress Protection
- 5 Year Product Warranty
- 20mm side conduit entry
- Fold down geartray
- 100 lm/W



### General information:

Wattage (W)	10 / 14 / 17
Lumens (lm)	1,000 / 1,400 / 1,700
Efficacy (lm/W)	100
Colour Temperature (K)	3000 / 4000 / 6000
CCT	3CCT
IP Rating	65
IK Rating	8
Class Rating	2
Energy Rating	E
Flicker	Flicker Free
Dimmable	Fixed
L70 Hours	60000
Paint Finish (RAL)	9016

### Technical information:

Application Location	Internal
Emergency Output (lm)	250
Beam Angle	120
CRI	80
Input Type	220-240V AC
Driver Type	CC
Operating Temperature To	30
Product Warranty (Years)	5
SDCM	6
Driver Brand	Lumineux
Socket	N/A
Frequency (Hz)	50   60
Diffuser Material	Polycarbonate
Install Options	BESA/Conduit
Install Type	Push Fit Terminals
Replaceable Driver	No
Replaceable LED	No
Body Material	ABS
Maintained	Maintained/Non-Maintained

## Apex Bulkhead

**Category:** Apex

**Part Number:** 431470-E3-MW

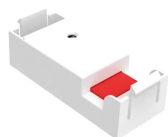
**Description:** Apex Bulkhead 10W/14W/17W 3CCT White Plug & Play E-SEL3 Emergency & Microwave



### Technical information:

Emergency Wattage (W)	2.0
Emergency IP Rating	20
Cell Type	YH IFR18650 - LiFePO4
Capacity (mAh)	2000
Recharge Time (Hours)	24
Emergency Duration (Hours)	3
Emergency Output (Standalone lm)	150
Charge Current (mA)	300
Battery Size (V/Ah)	3.2/2
Battery Temperature (To) (°C)	30
Module Length (mm)	125
Module Width (mm)	71
Module Height (mm)	31
Battery Length (mm)	650
Battery Width (mm)	20
Battery Height (mm)	20
Sensor Technology	Microwave
Sensor Type	Step-Dim
Max. Mounting Height (m)	6
Hold Time	5 Sec - 10 Min
Detection Radius	3.5 x 3
Standby Power	0.5
Standalone/Grouping	Standalone

### Compatible Products:



431127

Alwen Plug & Play MW Sensor  
(For Bulkheads)



430963

Grafham Bulkhead Emergency  
Conversion Pack 2W Plug &  
Play

# Apex Bulkhead

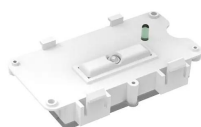
**Category:** Apex

**Part Number:** 431470-E3-MW

**Description:** Apex Bulkhead 10W/14W/17W 3CCT White Plug & Play  
E-SEL3 Emergency & Microwave



## Accessory Products:



430963

---

Grafham Bulkhead  
Emergency Conversion Pack  
2W Plug & Play