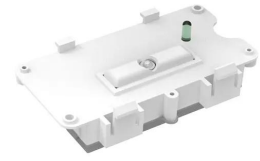


Technical Specification

Category: Grafham Bulkhead

Part Number: 430963

Description: Grafham Bulkhead Emergency Conversion Pack 2W
Plug & Play



Product Features:



General information:

Wattage (W)	2
Colour Temperature (K)	6500
IP Rating	20
IK Rating	3
Class Rating	2
Paint Finish (RAL)	9003

Technical information:

Application Location	Internal
Emergency Output (lm)	150
Input Type	Plug & Play
Operating Temperature To	30
Product Warranty (Years)	5
Driver Brand	Lumineux
Socket	N/A
Frequency (Hz)	50 60
Install Options	BESA/Conduit
Install Type	Plug Connector
Replaceable Driver	Professional
Replaceable LED	Professional
Body Material	Polycarbonate
Maintained	Non-Maintained
Emergency Wattage (W)	2.0
Emergency IP Rating	20
Cell Type	YH IFR18650 - LiFePO4
Capacity (mAh)	2000
Recharge Time (Hours)	24
Emergency Duration (Hours)	3
Emergency Output (Standalone lm)	150
Charge Current (mA)	300
Battery Size (V/Ah)	3.2 / 2
Battery Temperature (To) (°C)	30
Module Length (mm)	125
Module Width (mm)	71
Module Height (mm)	31
Battery Length (mm)	650

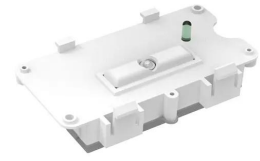
Technical Specification



Category: Grafham Bulkhead

Part Number: 430963

Description: Grafham Bulkhead Emergency Conversion Pack 2W Plug & Play



Technical information:

Battery Width (mm)	20
Battery Height (mm)	20
Sensor Technology	Microwave

Compatible Products:



430150-M3-MW

Ridgegate Bulkhead
8W/10W/14W 3CCT IP65
White Emergency Microwave
Step Dim Plug & Play



430150-M3

Ridgegate Bulkhead
8W/10W/14W 3CCT IP65
White Emergency Plug & Play



430150-MW

Ridgegate Bulkhead
8W/10W/14W 3CCT IP65
White Microwave Step Dim
Plug & Play



430150

Ridgegate Bulkhead
8W/10W/14W 3CCT IP65
White Plug & Play