

Hollingworth Full

Category: Hollingworth

Part Number: 431129-DD

Description: Hollingworth Diecast Bulkhead 12W/16W/18W 3CCT
IP65 Black Plug & Play Photocell



Product Features:

- Standard, step dim microwave, emergency and dusk to dawn available
- Tough and durable diecast body with polycarbonate diffuser
- Wall and ceiling mount
- LED lifespan 60,000 hours L70



General information:

Wattage (W)	12 / 16 / 18
Lumens (lm)	900 / 1,200 / 1,350
Efficacy (lm/W)	75
Colour Temperature (K)	3000 / 4000 / 6000
CCT	3CCT
IP Rating	65
IK Rating	10
Class Rating	1
Energy Rating	F
Flicker	Flicker Free
Dimmable	Fixed
L70 Hours	60000
Paint Finish (RAL)	7021

Technical information:

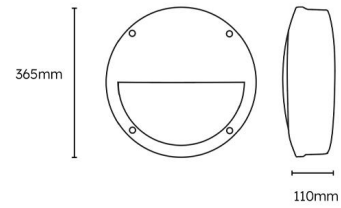
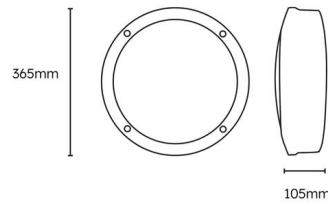
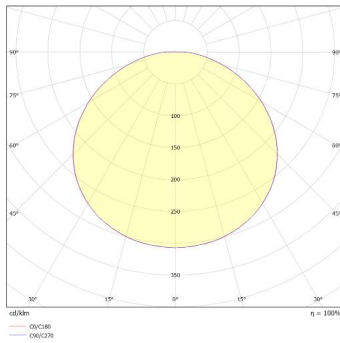
Application Location	Internal
Emergency Output (lm)	100
Beam Angle	120
CRI	80
Input Type	220-240V AC
Driver Type	CC
Operating Temperature From	-20
Operating Temperature To	40
Product Warranty (Years)	5
Driver Brand	Lumineux
Socket	N/A
Frequency (Hz)	50 60
Diffuser Material	Polycarbonate
Install Options	BESA/Conduit
Install Type	Push Terminal
Replaceable Driver	Professional
Replaceable LED	Professional
Body Material	Aluminium
Maintained	Maintained/Non-Maintained
Sensor Technology	Photocell
Sensor Type	On-Off
Standby Power	1.0
Standalone/Grouping	Standalone

Hollingworth Full

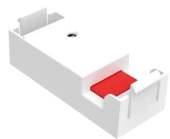
Category: Hollingworth

Part Number: 431129-DD

Description: Hollingworth Diecast Bulkhead 12W/16W/18W 3CCT
IP65 Black Plug & Play Photocell

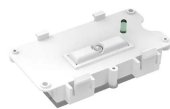


Compatible Products:



431127

Alwen Plug & Play MW Sensor
(For Bulkheads)



430963

Grafham Bulkhead Emergency
Conversion Pack 2W Plug &
Play