

## Windermere

**Category:** Windermere

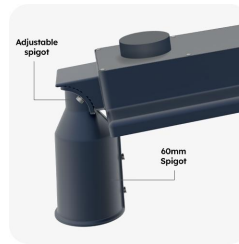
**Part Number:** 430611

**Description:** Windermere Street Light 30W 4000K IP66 RAL7012 Grey



### Product Features:

- Type III optic
- Supplied with NEMA socket with 15kA Surge Protected shorting cap
- TE Photocell option with a 15kA Surge Protection
- One piece, die-cast housing with UV resistant polycarbonate optical lens
- Integral cooling fin provides excellent thermal dissipation
- Supplied with rotating, adjustable bracket
- Additional, multi-bracket options available



### General information:

Wattage (W)	30
Lumens (lm)	4350
Efficacy (lm/W)	145
Colour Temperature (K)	4000
IP Rating	66
IK Rating	10
Class Rating	1
Energy Rating	C
Dimmable	Fixed
L70 Hours	50000
Paint Finish (RAL)	7012

### Technical information:

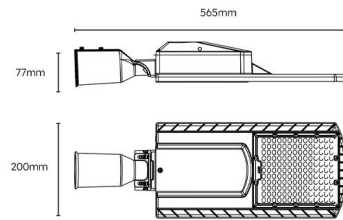
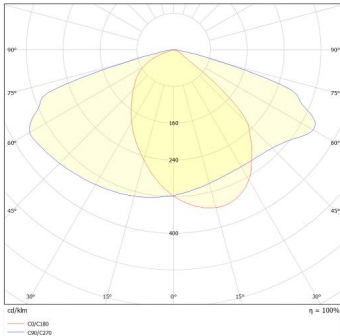
Application Location	External
Beam Angle	110
Optics	Asymmetric Type III
CRI	80
Input Type	220-240V AC
Driver Type	CC
Operating Temperature From	-20
Operating Temperature To	30
Product Warranty (Years)	5
Driver Brand	Sosen
Socket	NEMA
Frequency (Hz)	50   60
Diffuser Material	Polycarbonate
Install Options	BESA/Conduit
Install Type	1.5m H05RN-F
Replaceable Driver	Professional
Replaceable LED	Professional
Body Material	Die Cast Aluminium
Maintained	Maintained/Non-Maintained
Sensor Technology	Microwave

# Windermere

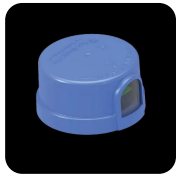
**Category:** Windermere

**Part Number:** 430611

**Description:** Windermere Street Light 30W 4000K IP66 RAL7012  
Grey



## Compatible Products:



430670

TE Nema Photocell Sensor  
with Surge Protector