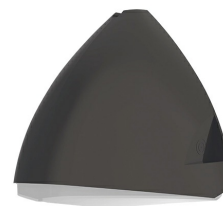


Hawkridge

Category: Hawkridge

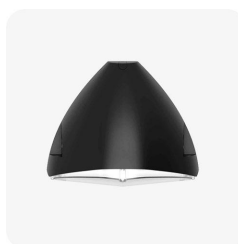
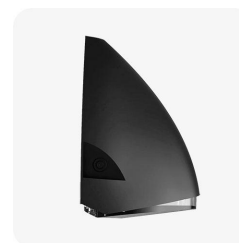
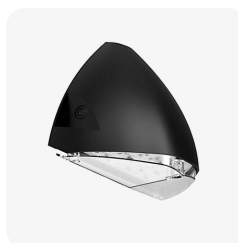
Part Number: 430698-M3-DD

Description: Hawkridge Wall Pack 18W/28W 3CCT Black
Emergency Photocell



Product Features:

- Tough aluminium body with polycarbonate diffuser
- LED lifespan 50,000 hours L70
- Standard, emergency and dusk to dawn options available
- IK08 impact rated
- Selectable wattages
- No upward light



General information:

Wattage (W)	18 / 28
Lumens (lm)	1975 / 3075
Efficacy (lm/W)	110
Colour Temperature (K)	3000 / 4000 / 6000
CCT	3CCT
IP Rating	65
IK Rating	8
Class Rating	1
Energy Rating	C
Dimmable	Fixed
L70 Hours	50000
Paint Finish (RAL)	7021

Technical information:

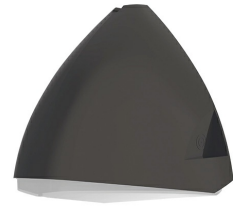
Application Location	External
Emergency Output (lm)	300
Optics	Asymmetric
CRI	80
Input Type	220-240V AC
Driver Type	CC
Operating Temperature From	-20
Operating Temperature To	40
Product Warranty (Years)	5
Driver Brand	Luminaireux
Socket	N/A
Frequency (Hz)	50 60
Diffuser Material	Polycarbonate
Install Options	BESA/Conduit
Install Type	Push Terminal
Replaceable Driver	Professional
Replaceable LED	Professional
Body Material	Aluminium
Maintained	Maintained/Non-Maintained

Hawkridge

Category: Hawkridge

Part Number: 430698-M3-DD

Description: Hawkridge Wall Pack 18W/28W 3CCT Black
Emergency Photocell



Technical information:

Emergency Wattage (W)	2.0
Emergency IP Rating	20
Cell Type	IFR18650 - LiFePO4
Capacity (mAh)	1500
Recharge Time (Hours)	24
Emergency Duration (Hours)	3
Emergency Output (Standalone lm)	150
Charge Current (mA)	300
Battery Size (V/Ah)	3.2 / 2
Battery Temperature (To) (°C)	30
Battery Length (mm)	650
Battery Width (mm)	18
Battery Height (mm)	18
Sensor Technology	Photocell
Sensor Type	On-Off
Standby Power	1.0
Standalone/Grouping	Standalone

