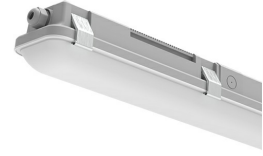


Technical Specification

Category: Tempest 2CCT

Part Number: 431341

Description: Tempest Anti-Corrosive 5ft Twin 26W/46W 2CCT IP65
Grey Plug & Play



Product Features:

- Up to 185 lm/W output performance
- Opal diffuser
- Wattage Selectable and 2CCT
- Pre-threaded M20 cable entry
- Designed for easy and rapid installation



General information:

Wattage (W)	26 / 46
Lumens (lm)	4,800 / 8,275
Efficacy (lm/W)	185
Colour Temperature (K)	4000 / 5000
CCT	2CCT
IP Rating	65
IK Rating	8
Class Rating	1
Energy Rating	A
Flicker	Flicker Free
Dimmable	Fixed
L70 Hours	70000
Paint Finish (RAL)	7047

Technical information:

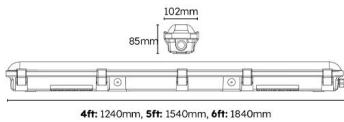
Application Location	Internal
Beam Angle	120
CRI	80
Input Type	220-240V AC
Driver Type	CC
Operating Temperature From	-20
Operating Temperature To	45
Product Warranty (Years)	5
Driver Brand	Boke
Socket	N/A
Frequency (Hz)	50 60
Diffuser Material	Polycarbonate
Install Options	BESA/Conduit
Install Type	Push Fit Terminal
Replaceable Driver	Professional
Replaceable LED	Professional
Body Material	Polycarbonate
Maintained	Maintained/Non-Maintained
Sensor Technology	Microwave

Technical Specification

Category: Tempest 2CCT

Part Number: 431341

Description: Tempest Anti-Corrosive 5ft Twin 26W/46W 2CCT IP65
Grey Plug & Play



Compatible Products:



431346

Alwen Linear Microwave/SD
Sensor 12V DC Plug & Play



430962

Grafham 3.5W Conversion
Pack 50-300V DC 0-40mA
LifePO4 3.2V DC 3.2Ah Plug &
Play E-SEL3 Emergency



430904

Step-Dim Remote Control for
431346