

## Hatherton

**Category:** Hatherton

**Part Number:** 431132-E3-MW

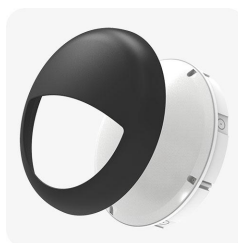
**Description:** Hatherton Multi Bulkhead 12W/16W/18W 3CCT IP66

White Plug & Play E-SEL3 Emergency Microwave Step-Dim



### Product Features:

- Standard, step dim microwave and emergency options available
- Tough and durable body with polycarbonate diffuser
- Wall and ceiling mount
- LED lifespan 60,000 hours L70
- X4 20mm conduit entry points



### General information:

Wattage (W)	12 / 16 / 18
Lumens (lm)	1,450 / 1,800 / 1,950
Efficacy (lm/W)	124
Colour Temperature (K)	3000 / 4000 / 6000
CCT	3CCT
IP Rating	66
IK Rating	08
Class Rating	2
Energy Rating	D
Flicker	Flicker Free
Dimmable	Fixed
L70 Hours	60000
L80 Hours	40000
Paint Finish (RAL)	9016

### Technical information:

Application Location	Both
Beam Angle	140
CRI	80
Input Type	220-240V AC
Driver Type	CC
Operating Temperature (°C)	-20 - +40
Product Warranty (Years)	5
SDCM	5
Driver Brand	Lumineux
Socket	N/A
Frequency (Hz)	50   60
Diffuser Material	Polycarbonate
Install Options	BESA/Conduit
Install Type	Push Terminal
Body Material	ABS
Maintained	Non-Maintained
Emergency Wattage (W)	2.0
Emergency IP Rating	20
Cell Type	YH IFR18650 - LiFePO4
Capacity (mAh)	2000
Recharge Time (Hours)	24
Emergency Duration (Hours)	3
Emergency Output (Standalone lm)	150
Charge Current (mA)	300
Battery Size (V/Ah)	3.2/ 2
Battery Temperature (To) (°C)	30
Module Length (mm)	125
Module Width (mm)	71

# Hatherton

**Category:** Hatherton

**Part Number:** 431132-E3-MW

**Description:** Hatherton Multi Bulkhead 12W/16W/18W 3CCT IP66  
White Plug & Play E-SEL3 Emergency Microwave Step-Dim



## Technical information:

Module Height (mm)	31
Battery Length (mm)	650
Battery Width (mm)	20
Battery Height (mm)	20
Sensor Technology	Microwave
Sensor Type	On-Off
Max. Mounting Height (m)	6
Hold Time	5 sec - 10 min
Detection Radius	3.5 x 3
Standby Power	0.5
Standalone/Grouping	Standalone

