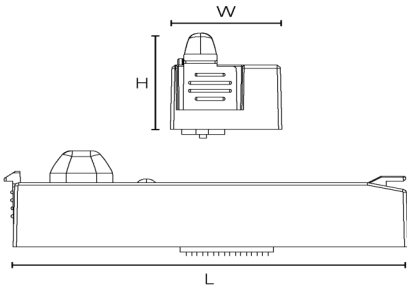


Dimensions:

Part No.	Description	Length (mm)	Weight (mm)	Height (mm)	Weight (g)
430916	Alwen Plug & Play Linear MW Sensor	103	26	30	50



Installation Instructions



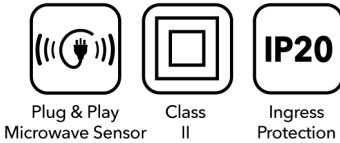
Alwen Plug & Play Sensor

Input	220-240V AC 50/60Hz
Max Load	200W (LED)
Operating Temp	-20°C – +50°C
Connection Type	Quick Connector
Sensor Type	Microwave
Mounting Height	6m Max.
Control Type	ON/OFF



Box Contents:

- Alwen MW Sensor



Tools Required For Installation:

- N/A



End Of Life Disposal:

Disassembly instructions for end of life disposal available on website.
Disposal of Electronic Equipment WEEE Directive 2002/96/EC This product falls within the scope of the Waste Electrical & Electronic Equipment Directive (WEEE), which means the product should not be disposed of as normal household waste. Please recycle where facilities exist or check with your Local Authority. RoHS – All components and materials used in this product are RoHS 2002/95/EC compliant. Specifications may change from time to time. The information contained in this leaflet is for guidance only and should not be considered as always accurate and should be treated as not representative.

READ THESE INSTRUCTIONS THOROUGHLY BEFORE INSTALLATION
KEEP THESE INSTRUCTIONS FOR FUTURE REFERENCE.
IMPORTANT:
This product must be installed by a qualified electrician or competent person, and in accordance with current building and IET wiring regulations.

Warranty:

This part is warranted for a period of 5 Years from the date of purchase**. The warranty could be invalidated should the product not be installed according to these instructions, outside the scope of the specification or the product has been altered or tampered with in any way. Please see website for terms and conditions.



WARNING: Risk of electric shock!
Isolate the mains power before proceeding.

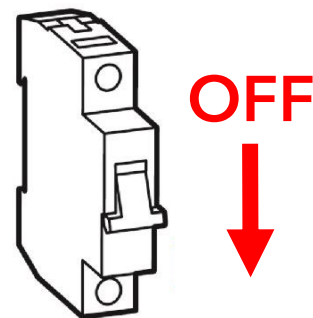
- Isolate & secure mains power before performing any inspections, installations or removals.
- It is the installer's responsibility to ensure the circuit is suitable for the required supply voltage and the total load of the luminaire/s. The supply cable and fuses/circuit breakers must be correctly rated for the electrical load and considerations made for any and all transient inrush currents that may occur.
- Do not perform circuit Insulation Resistance tests at 500V with luminaire/s connected.

Installation Procedure:

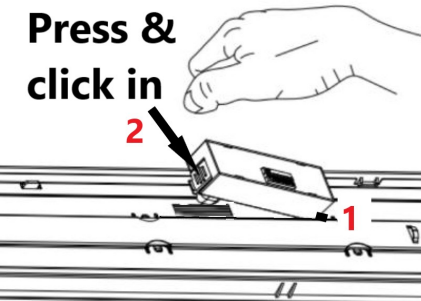
1. Make sure mains power is off and safe isolation procedures are followed.
2. Slot the sensor into the gear tray as shown, press the lever & click in to position. Make sure the antenna protrudes through the gear tray and it is firmly fixed in the slot.
3. Disconnect the cable connectors between terminal block (white) and the driver (black).
4. Join the terminal block (white) & sensor input (white) connectors.
5. Join the driver (black) & sensor input (black) connectors.
6. Select the dip-switches on the back of the sensor to your desired settings as shown on the table below.
7. Reconnect mains supply and test sensor function.

Detection Area			Hold Time				Daylight Sensor			
1	2		3	4	5		6	7	8	
ON	ON	100%	ON	ON	ON	5s	ON	ON	ON	2Lux
-	ON	75%	-	ON	ON	30s	ON	ON	-	10Lux
ON	-	50%	ON	-	ON	90s	-	ON	-	30Lux
-	-	25%	-	-	ON	5min	ON	-	-	50Lux
			ON	ON	-	20min	-	-	-	Disable
			-	-	-	30min				

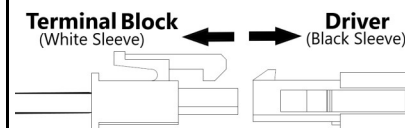
1.



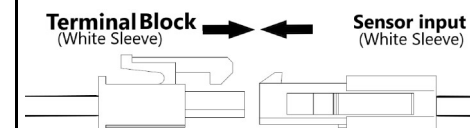
2.



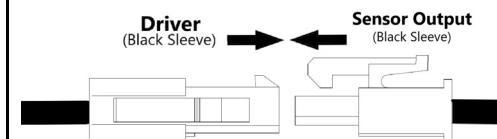
3.



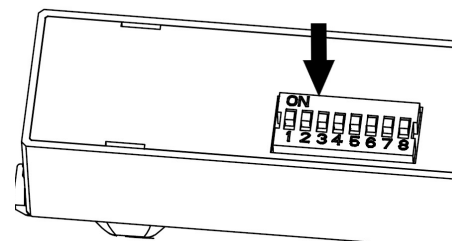
4.



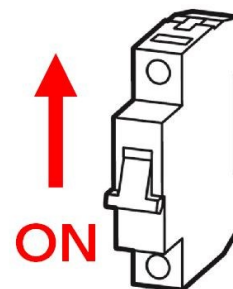
5.



6.



7.



8.