

READ THESE INSTRUCTIONS THOROUGHLY BEFORE INSTALLATION KEEP THESE INSTRUCTIONS FOR FUTURE REFERENCE.

IMPORTANT:

This product must be installed by a qualified electrician or competent person, and in accordance with current building and IET wiring regulations.

BOX CONTENTS

This lighting fixture has been properly packed to avoid damage during transit. Before commencing with the installation carefully inspect the luminaire to confirm there is no damage. DO NOT INSTALL if any damage has occurred to the fixture or any of its components.

- Light Fitting
- Instruction Manual
- Control Gear
- Inline Connector

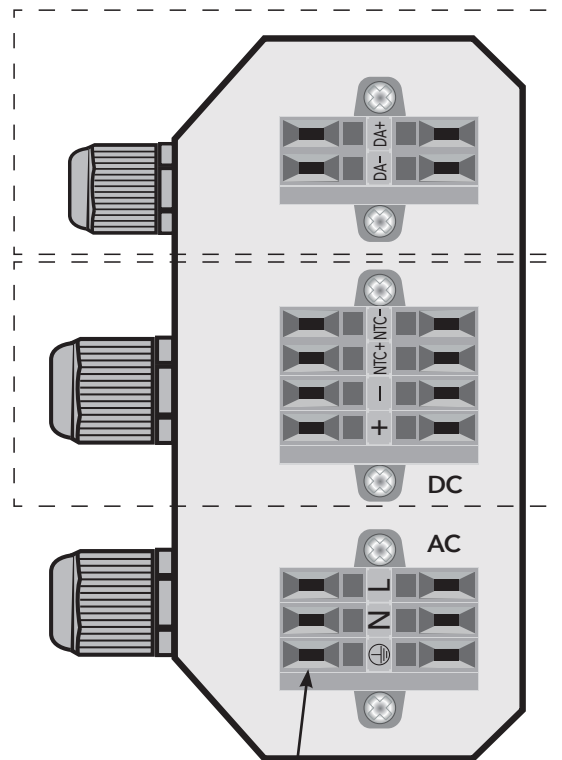
TOOLS REQUIRED

- 36mm Spanner
- Screwdriver
- Hex key 6mm & 8mm
- Cable

INSTALLATION INSTRUCTIONS

Installation must be conducted by a qualified electrician.

We would recommend using an appropriate safety chain. (Not supplied). See reverse for product weight.



Loosen the 4 cover screws and remove cover.

DALI

For DALI install using the allocated terminal block with H05RN-F 2 core 1.0mm² to the desired length of your install.

NTC

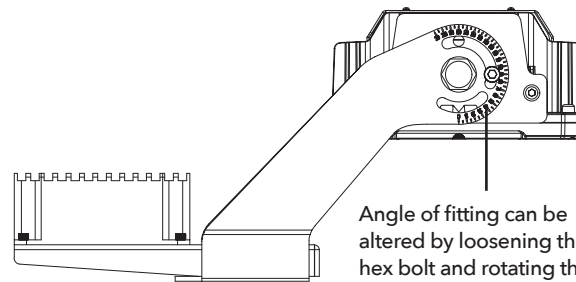
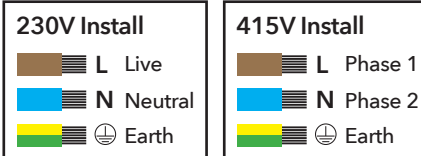
No connection.

REMOTE DRIVER BOX

For installing driver box remotely use inline connector (supplied) and H07RN-F 2 core 1.5mm² to the length of your desired install.



Inline connector (supplied)



Angle of fitting can be altered by loosening the hex bolt and rotating the lamp to desired angle.

PLEASE READ THESE INSTRUCTIONS BEFORE INSTALLATION.



WARNING

Risk of electric shock! Isolate the mains power before proceeding.

- Turn off the mains power before performing inspections, installation, or removal
- Verify that the supply voltage is correct by comparing it with the luminaire label information
- It is the installer's responsibility to ensure installation is suitable for the total load of the luminaire(s). The supply cable, fuses/circuit breaker must be correctly rated for the electrical load and considered for any transient inrush currents that may occur
- Do not perform insulation strength or resistance tests on installed luminaire(s) connected.

CARSINGTON PLUS SPORTS FLOODLIGHT DIMENSIONS

Part No.	Description	Watts	L (mm)	W (mm)	H (mm)	Weight
430510-25-415V	Carsington Plus with Control Gear	600W	469	689	224	17.3Kg

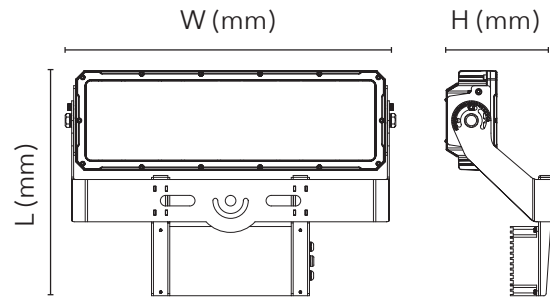
DISPOSAL

The light source of this unit is not replaceable; when the light source reaches its end of life the whole luminaire shall be replaced.

Disassemble instructions for end of life disposal available on website.

Disposal of Electronic Equipment WEEE Directive 2002/96/EC This product falls within the scope of the Waste Electrical & Electronic Equipment Directive (WEEE), which means the product should not be disposed of as normal household waste. Please recycle where facilities exist or check with your Local Authority. RoHS - All components and materials used in this product are RoHS 2002/95/EC compliant.

Specifications may change from time to time. The information contained in this leaflet is for guidance only and should not be considered as always accurate and should be treated as not representative.



WARRANTY

This luminaire is warranted for a period of 5 years from the date of purchase.** The warranty could be invalidated should the light fitting not be installed according to these instructions, outside the scope of the specification or the product has been altered or tampered with in any way. Please see website for terms and conditions.

PRODUCT TEMP SPECIFICATION

Standard -30 to +50°C

* Only dimmable via DALI control

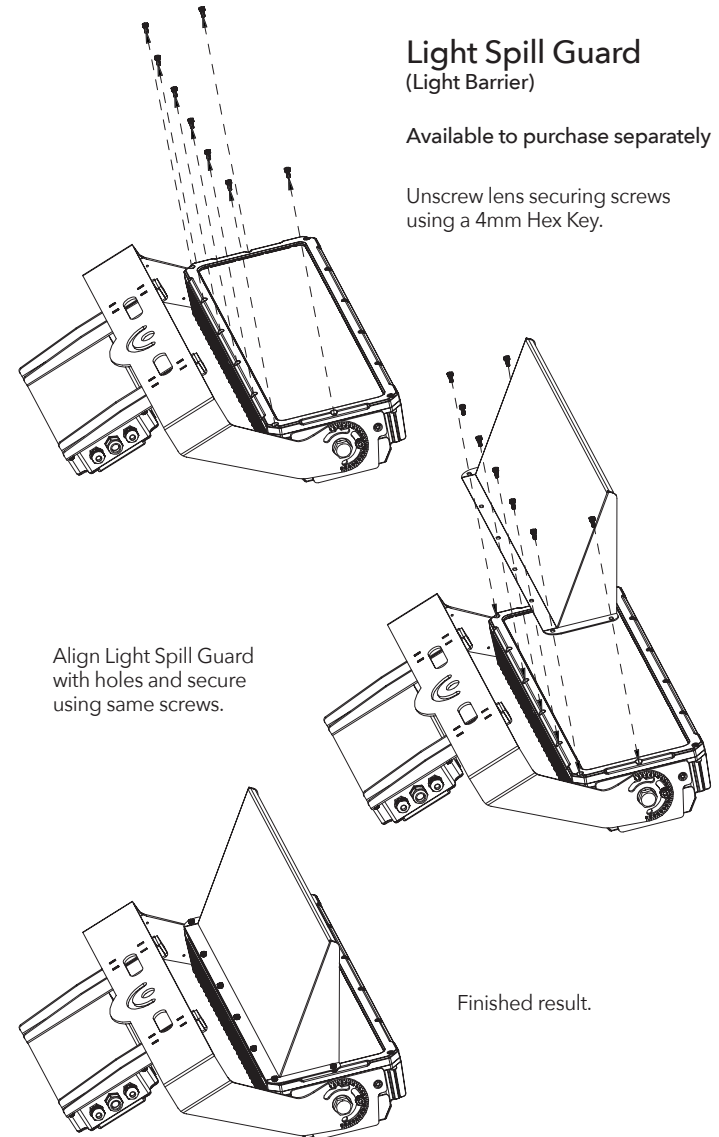
** Please see our website for more detailed information on warranty.

CARSINGTON PLUS BACK SPILL INSTALLATION

Light Spill Guard (Light Barrier)

Available to purchase separately

Unscrew lens securing screws using a 4mm Hex Key.



Align Light Spill Guard with holes and secure using same screws.

Finished result.

This product contains a light source of energy efficiency Class B.

Technical Helpline: +44 (0)1507 328031